

ROAD INDEX

A	APPLE BLOSSOM LANE B3	I	IRVING DRIVE I1	S	SANGGATE CIRCLE F3
B	BARDWELL DRIVE D3	J	JACKSON DRIVE J1	T	TATTERSALL (PVT.) B3
C	CAMBRIDGE DRIVE C2	K	KENTON ROAD F5	U	UNION ROAD U1
D	DEANS GATE (PVT.) A5	L	LAKE FOREST DRIVE C1	V	VALLEY VIEW DRIVE C4
E	EAST HILL DRIVE D3	M	MANCHESTER DRIVE B4	W	WALNUT RIDGE ROAD B1
F	FAIRFIELD TRAIL D3	N	NEW MARKET (PVT.) B3	X	XENON DRIVE X1
G	GEORGE DRIVE G1	O	OAK HILL DRIVE B3	Y	YORK DRIVE Y1
H	HAROLD DRIVE C4	P	PARKVIEW DRIVE C3	Z	ZEPHYRUS DRIVE Z1
I	IRVING DRIVE I1	Q	QUAKER DRIVE Q1		
J	JACKSON DRIVE J1	R	RANCH DRIVE E5		
K	KENTON ROAD F5	S	SHADY LANE C6		
L	LAKE FOREST DRIVE C1	T	TATTERSALL (PVT.) B3		
M	MANCHESTER DRIVE B4	U	UNION ROAD U1		
N	NEW MARKET (PVT.) B3	V	VALLEY VIEW DRIVE C4		
O	OAK HILL DRIVE B3	W	WALNUT RIDGE ROAD B1		
P	PARKVIEW DRIVE C3	X	XENON DRIVE X1		
Q	QUAKER DRIVE Q1	Y	YORK DRIVE Y1		
R	RANCH DRIVE E5	Z	ZEPHYRUS DRIVE Z1		

- ① CHESTER ELEMENTARY SCHOOL
- ② WEST GAUGA MIDDLE SCHOOL
- ③ WEST GAUGA HIGH SCHOOL
- ④ HAWKEN SCHOOL
- ⑤ COMMUNITY CHURCH
- ⑥ CHRIST PRESBYTERIAN CH.
- ⑦ BAPTIST CHURCH
- ⑧ ST ANSLEM CHURCH-SCHOOL
- ⑨ CEMETERY
- ⑩ CEMETERY
- ⑪ CHESTER TOWNSHIP CEM.
- ⑫ ROLLING GREEN MEM. CEM.
- ⑬ CHESTER TOWN HALL
- ⑭ UNITED STATES POST OFFICE
- ⑮ CHESTER VOL. FIRE DEPT.
- ⑯ LINDSEY ELEMENTARY SCHOOL

CHESTER TOWNSHIP

SCALE: 1" = 2000'

ROBERT L. PHILLIPS,
GAUGA COUNTY ENGINEER

--- UNPAVED ROAD
--- PAVED ROAD
++++ RAILROAD

--- TOWNSHIP LINE
--- COUNTY LINE
--- CORPORATION LINE



SCALE 1" = 300'
 JANUARY 1, 1998

Indicates survey on file with tax map dept

* Inadequate description

RELATIVE REPRESENTATION

A	B	C	D
E	F	G	H
I	J	K	L
M	N	O	P

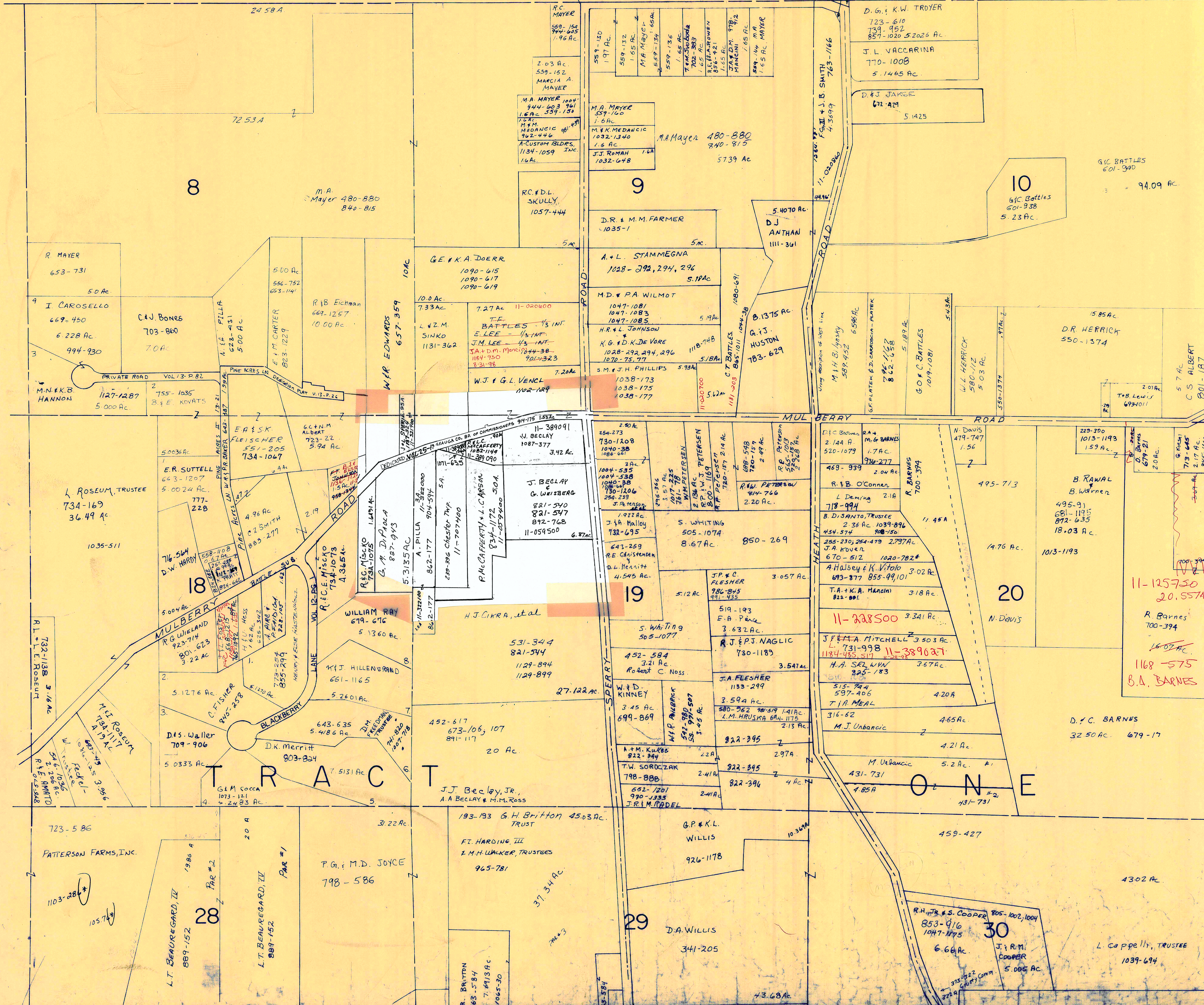
CHESTER B

23

24

25

26



TOWNSHIP

SCALE 1"=300'

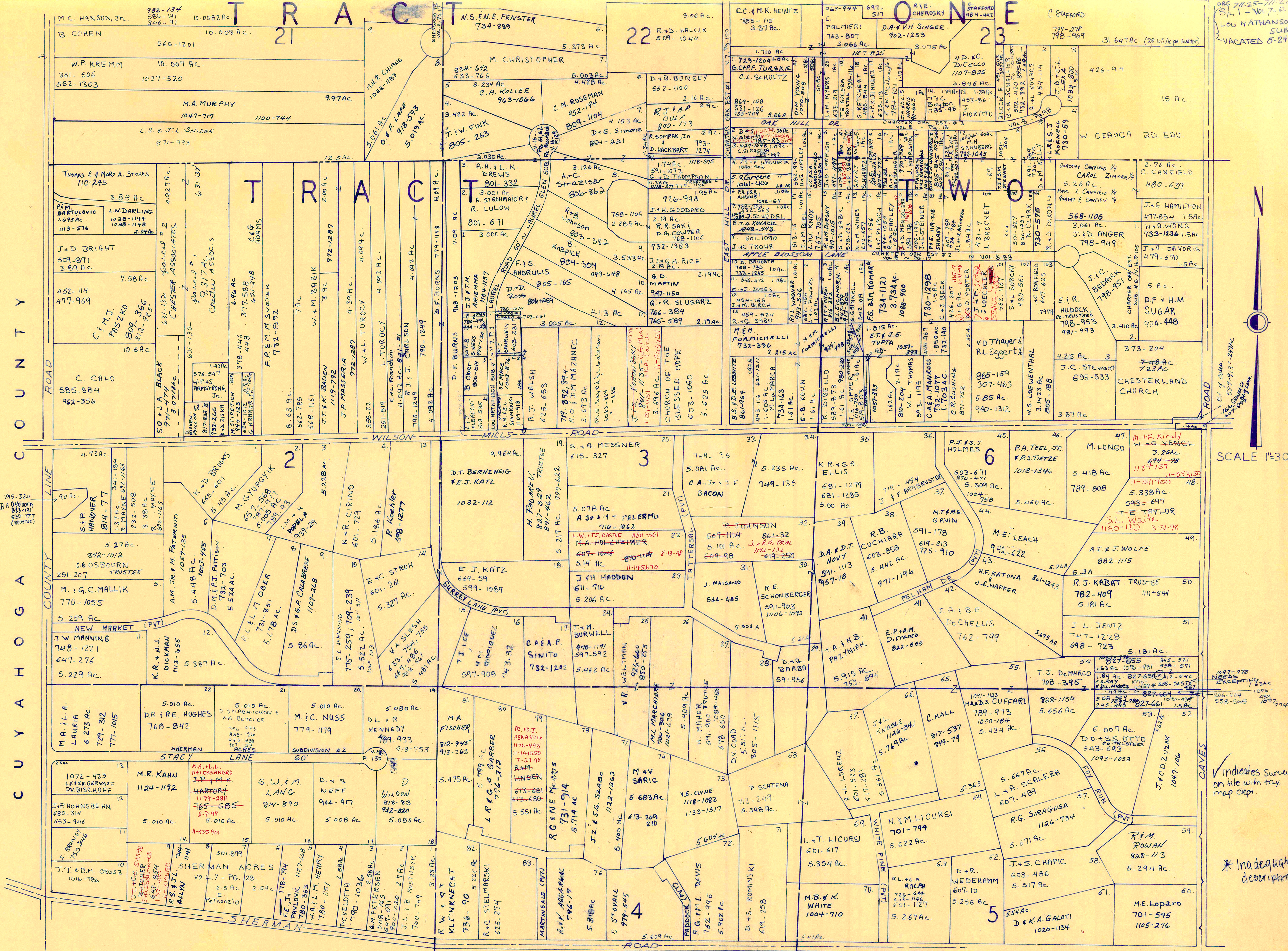
Indicates survey on file with tax map dept.

*Inadequate description

JANUARY 1, 1993
RELATIVE REPRESENTATION

A	B	C
E	F	G
I	J	K
M	N	O

CHESTER D



ORG 71-25-711 21
 (S) L 1 - Vol. 7 - P. 1
 Lou NATHANSON'S
 SUB.
 VACATED 5-24-81

SCALE 1"=300'

✓ Indicates Survey on file with tax map dept.

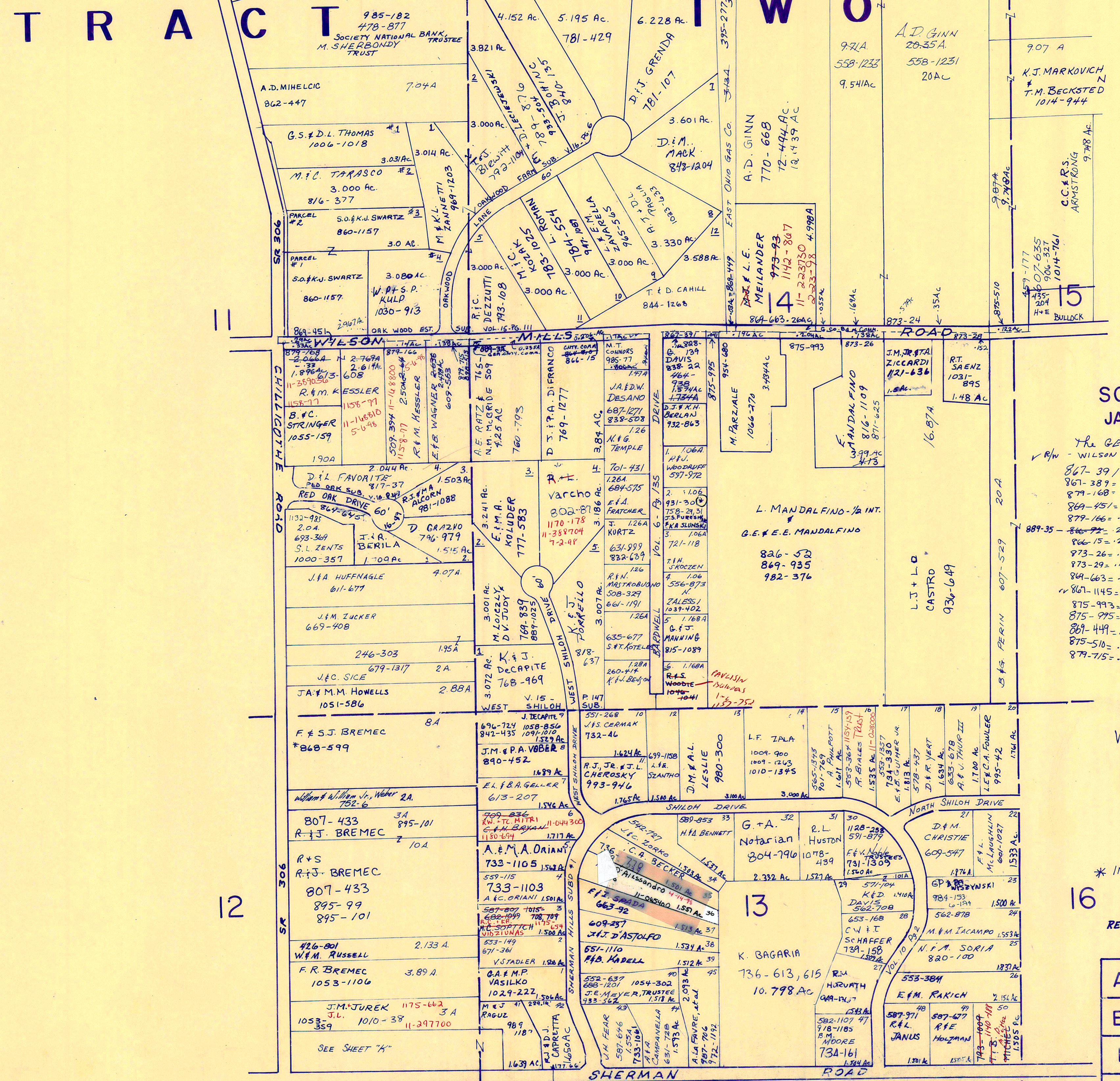
* Inadequate description

JANUARY 1, 1993
 Relative Representation

A	B	C	D
E	F	G	H
I	J	K	L
M	N	O	P

CHESTER COUNTY

TRACT ONE



SEE MAP "H"

SCALE 1"=300'
JAN. 1, 1996

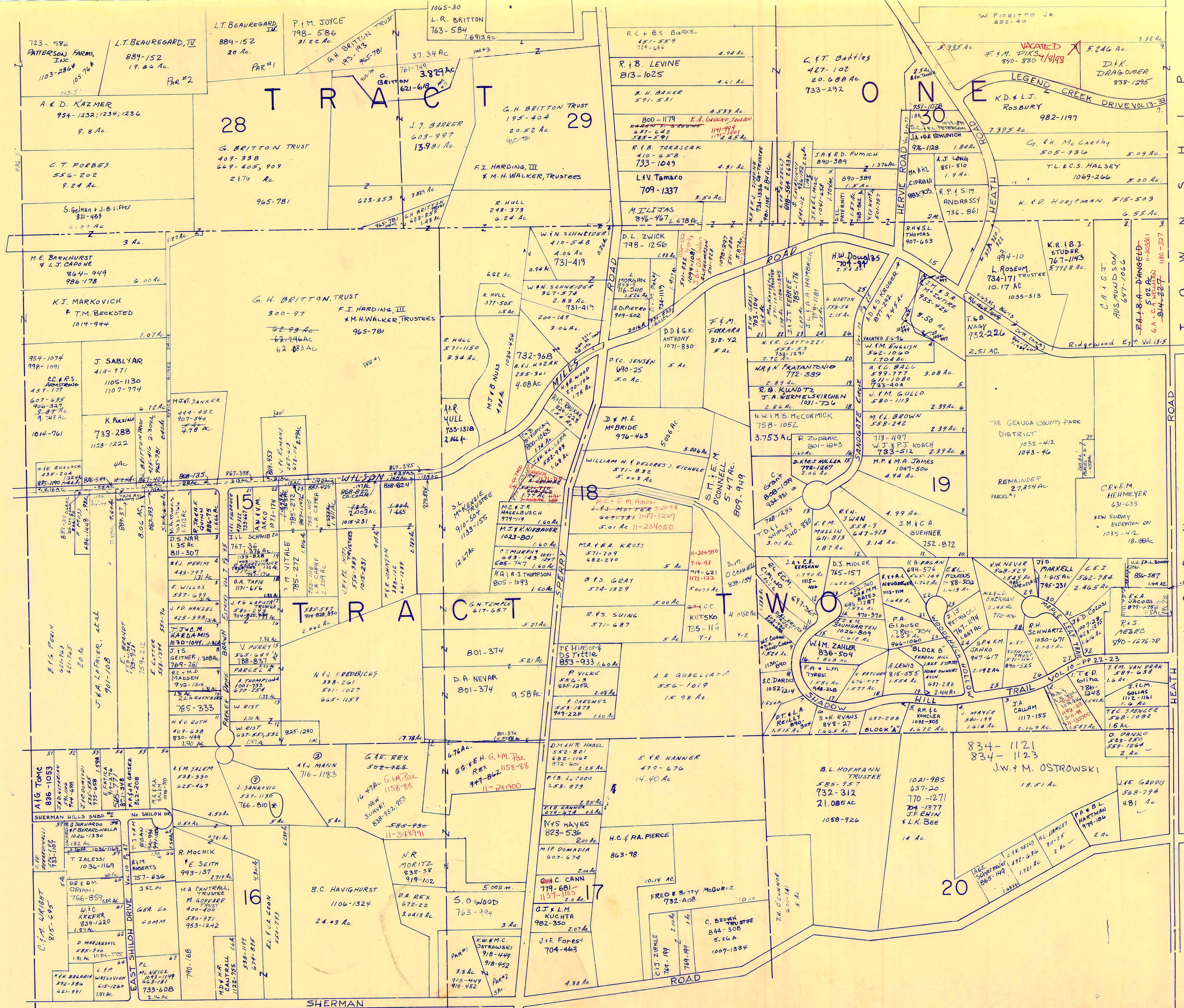
The GEAUGA CO. Bd. of COMMISSIONERS
v. W. WILSON MILLS RD.

867-391 = .16AC
867-389 = .19AC
874-168 = .13AC
869-451 = .29AC
879-166 = .14AC
889-35 = .235AC
866-15 = .206AC
873-26 = .131AC
873-29 = .152AC
894-663 = .26AC
861-1145 = .17AC
875-993 = .204AC
875-975 = .04AC
881-449 = .03AC
875-510 = .122AC
877-715 = .138AC

✓ indicates survey on file with tax map dept.

* INADEQUATE DESCRIPTION
JANUARY 1, 1998
RELATIVE REPRESENTATION

A	B	C	D
E	F	G	H
I	J	K	L
M	N	O	P



SCALE 1" = 300'

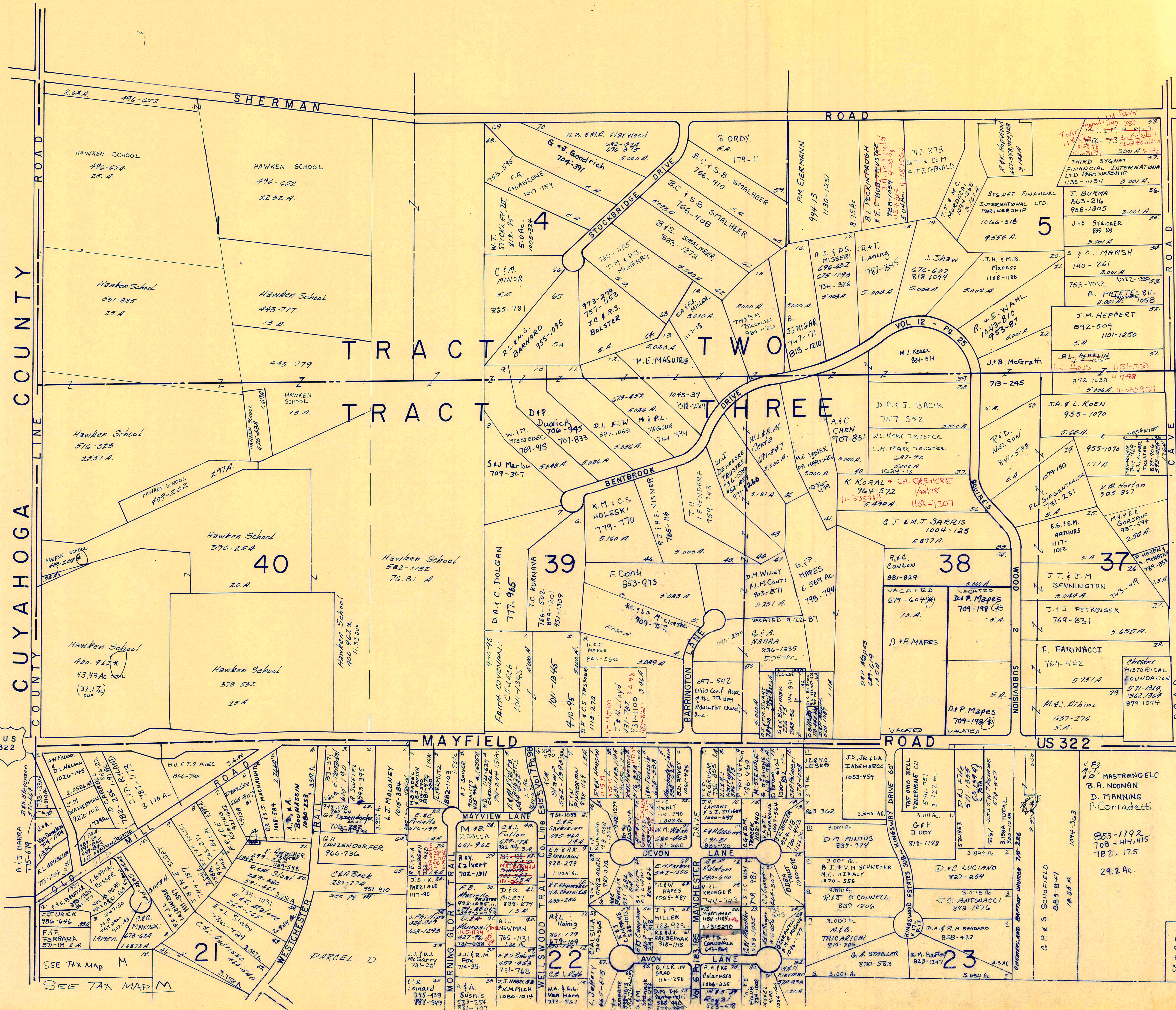
Indicates survey on file with tax map dept.

* Inadequate description

JANUARY 1, 1998
RELATIVE REPRESENTATION

A	B	C	D
E	F	G	H
I	J	K	L
M	N	O	P

CHESTER H



US 322

US 322

SCALE 1"=300

✓ indicates survey on file with tax map dept.

JANUARY 1, 1997

A	B	C	D
E	F	G	H
J	K	L	
M	N	O	P

CHESTER I
RELATIVE REPRESENTATION

* Inadequate description

CHESTER

SEE TAX MAP M

SEE TAX MAP M

M. MASTRANGELI
B. A. NOONAN
D. MANNING
P. Corradetti
853-1192
708-414,415
782-125
29.2 AC.

D. P. MAPES
709-198

D. P. MAPES
709-198

D. P. MAPES
709-198

D. P. MAPES
709-198

D. P. MAPES
709-198

D. P. MAPES
709-198

D. P. MAPES
709-198

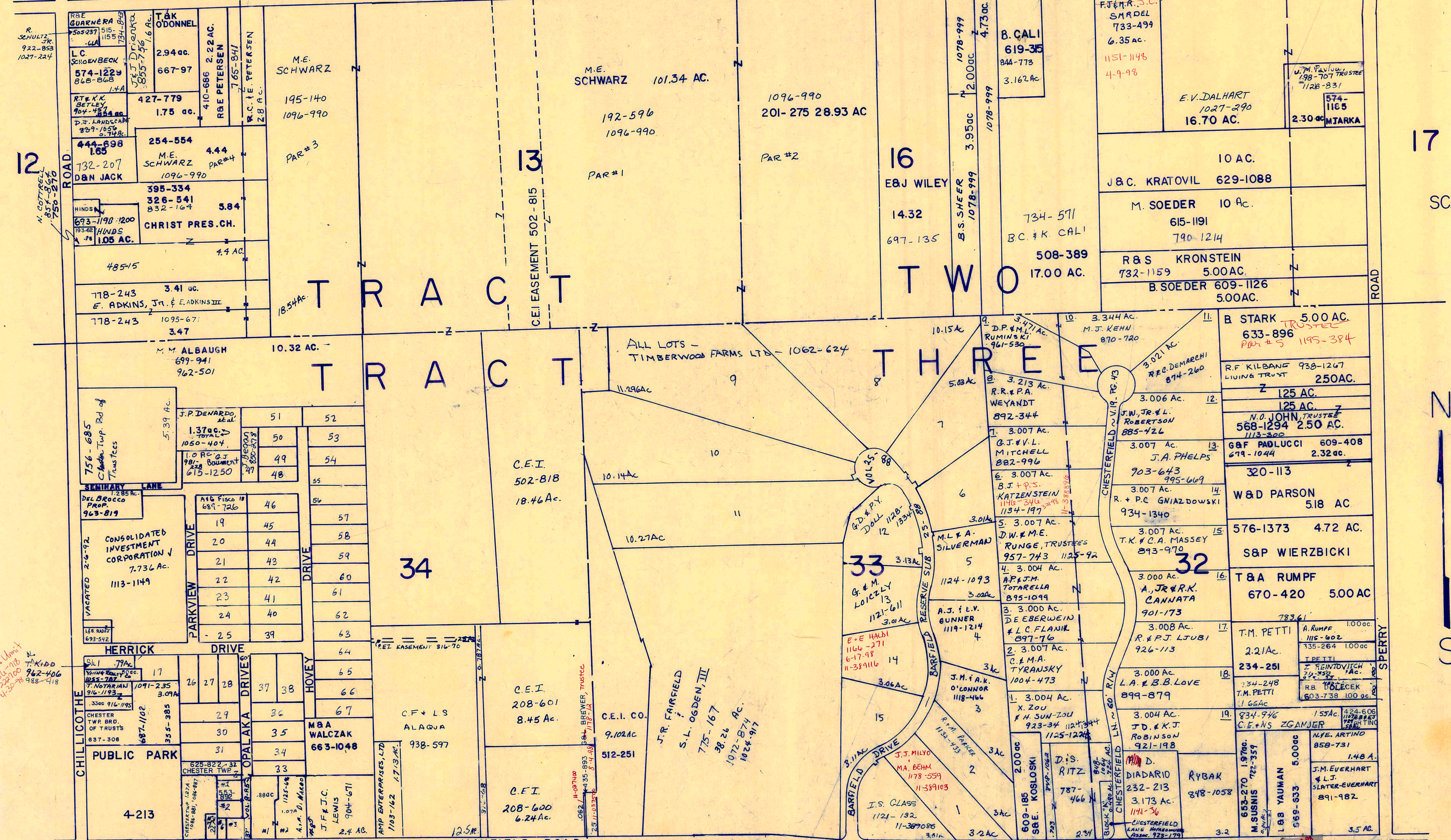
2 H C&H METZ 444-833
3 H
4 H
5 H
6 H
7 H
8 H VACATED 2-6-92
9 H Lots 2-3-4-5-6-7
10 H 8-9-10-11-12
11 H 13-14-15-16

- 23 H F.P. FERRARA 944-947
- 24 D.L. TORTORICE 935-1104
- 25 R.M. & J.M. VANDIVER 739 689,948-312
- 26 CHESTER TWP 1000-97
- 27 H. & W.M. BARRE 1044-1228
- 28 D. J. & W. B. 505-584 862-1050
- 29 D. J. & W. B. 1077-129
- 30 DALILLO, INC. 730-830, 902-1168, 914-623
- 31 EBC BROOKS 335-31
- 32 LARRICK FAMILY 496-973; 920-953; 1122-431
- 33 J.B. SPISAK 519-83
- 34 K&G GREIHER 285-352
- 35 E. KOSZENSKI 599-386
- 36 R&F GAFFNEY 697-709
- 37 G.M. & M.L. BURRNETT 582-1101
- 38 R. IAMMARINO 617-394
- 39 R & P HASSETT 425-370
- 40 S. BARTLETT 697-750
- 41 L. J. M. SPRING 1060-584 S. Borchelt 1158-1180
- 42 E.S. & S.G. IACONA 938-1079
- 43 W. K. DePetro 812-1247-88-633
- 44 " " 812-1247
- 45 T.L. & K.E. KRANARZ 1027-378
- 46 D.L. & A. GATTO 1058-779
- 47 W&D LUCIANO 496-436
- 48 L. HOMES 454-673
- 49 T.O. MARCUS 550-1185; 875-864
- 50 F&P ACZEL 396-127; 753-1234
- 51 RAL FRANK 509-154
- 52 M.L. MANNELLA 1057-604, 1044-605
- 53 F.B.H. WISCH 307-145; 953-280
- 54 " " 973-156
- 55 J.M. JERMAN 936-487
- 56 R.L. BROWN TRUSTEE 520-790, 1038-828
- 57 B. J. MARPEL UCH. 278-125 974-685 1003-753
- 58 G.P. PAOLETTI 443-568 860-1145; 972-1319
- 59 A&R WOODWORTH 315-68
- 60 J&G PECK 657-386
- 61 C.F. RIPLEY 178-13
- 62 T. ALLEN & M. BARZ 1061-1165
- 63 D.F. & P.M. CONTI 795-80
- 64 W.H. EMERICK 1090-268
- 65 W. MANSFIELD 278-299-1045-741
- 66 J.W. MUNK 689-959
- 67 R.A. PINGATORE 856-255 924-1203

L. Petronzio 805-5310
A&G FISCO 478-554
R&M DIMUZIO 565-25
F.C. NEEDS 899-10
R.W. & D.M. KANGOR 860-49
A&E SOBODOSH 781-1238

251-488
R. & P. WANG 870-1176 3.89 AC.
J. M. JUREK 1010-38 3 AC.

1078-1 409-209 2.34
1037-79 546-1022
1102-1210 J&K 1.87
L. RICHMOND RICHMOND



SEE DETAIL SHEET "L"
L. PETRONZIO 711-10
M.H. & R. ALBINO 901-906
MAYWOOD PARK, INC. 903-1740
J. MASON 418-183-6-9
G.L. HISS 643
M.H. LANHER 910-928
W.L. Keefer 883-598
F. MIKLAUSICH 47.91ac
W.L. KEELER 883-598

- 553-892 A. FERRARA .415 AC
- A.D. OLIVIERO 801-257367
- 621-634 W&P GALIARDI .057
- H. HOFFMAN ET AL 816-148
- 734-1083, 609-148 J.E. AMBROSE 0.732 AC
- 678-1144 A.D. OLIVIERO .17 AC
- 486-58 A.J. HENRY 734-196 .22 AC
- 791-1110 C&A BALICE

(ALL LOTS ARE NEAR PUBLIC PARK ON MAYFIELD)

SCALE: 1 inch = 300ft

Indicates survey on site with tax map dept.

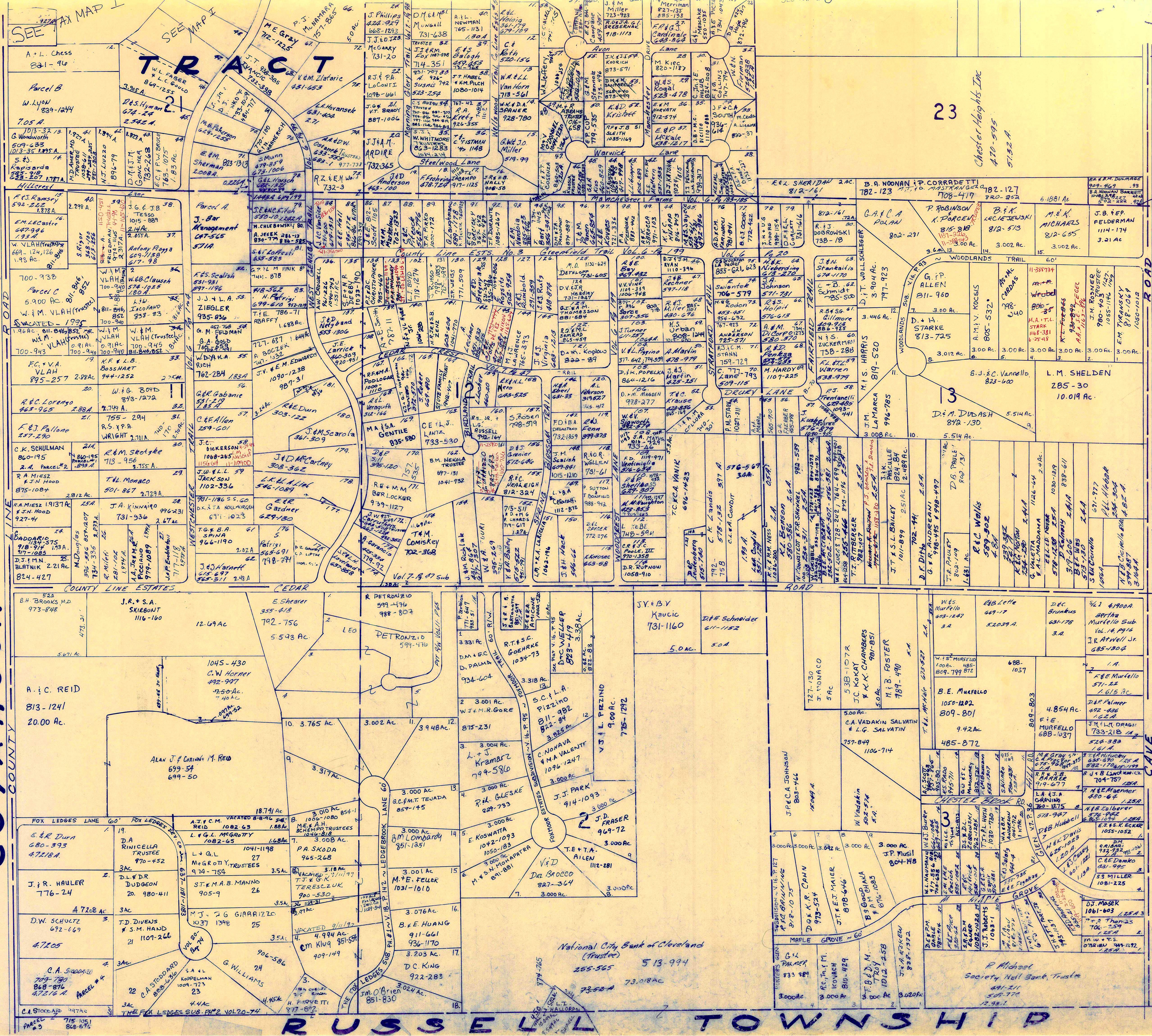
* Inadequate description

JANUARY 1, 1998 REALTY REPRESENTATIVE

A	B	C	D
E	F	G	H
I	J	K	L
M	N	O	P

CHESTER "K"

CUYAHOGA COUNTY



23

Chester Heights Inc
470-595
5152A

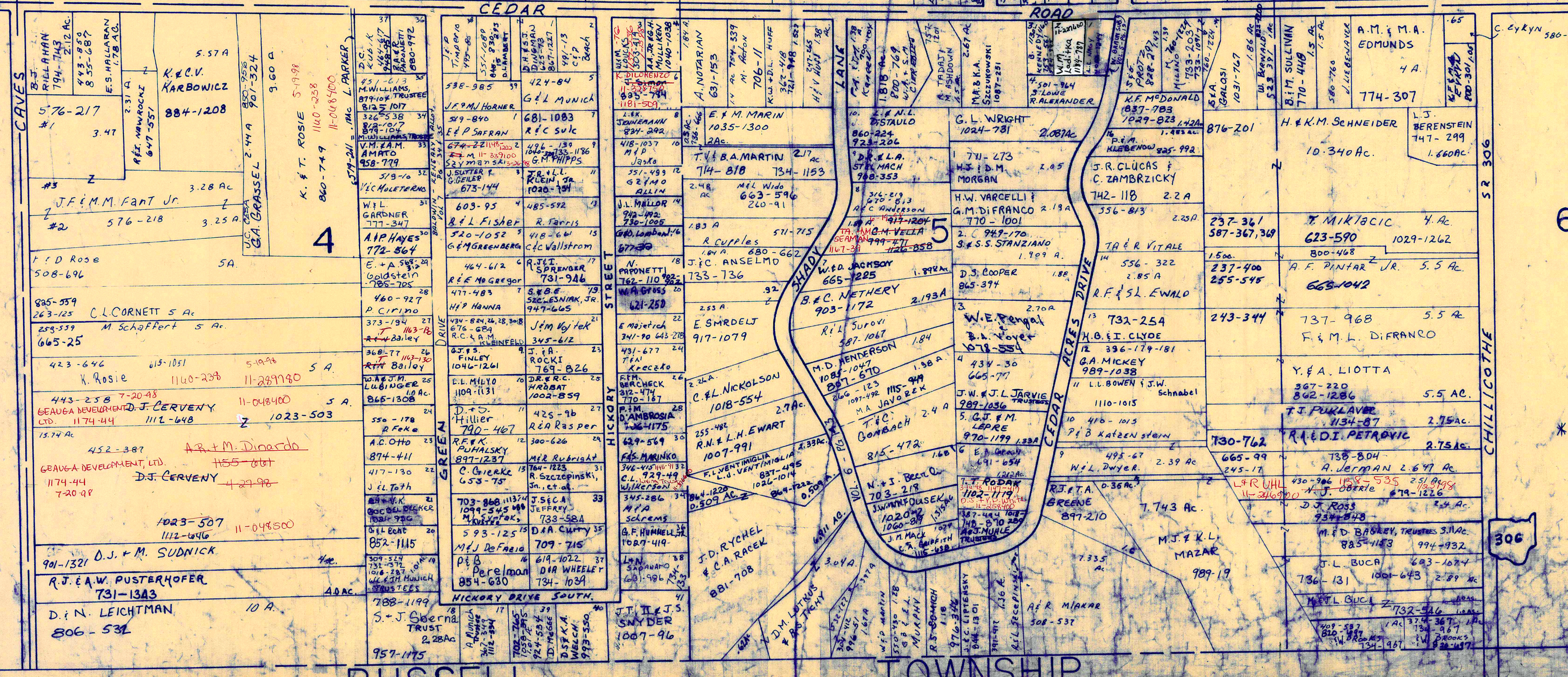
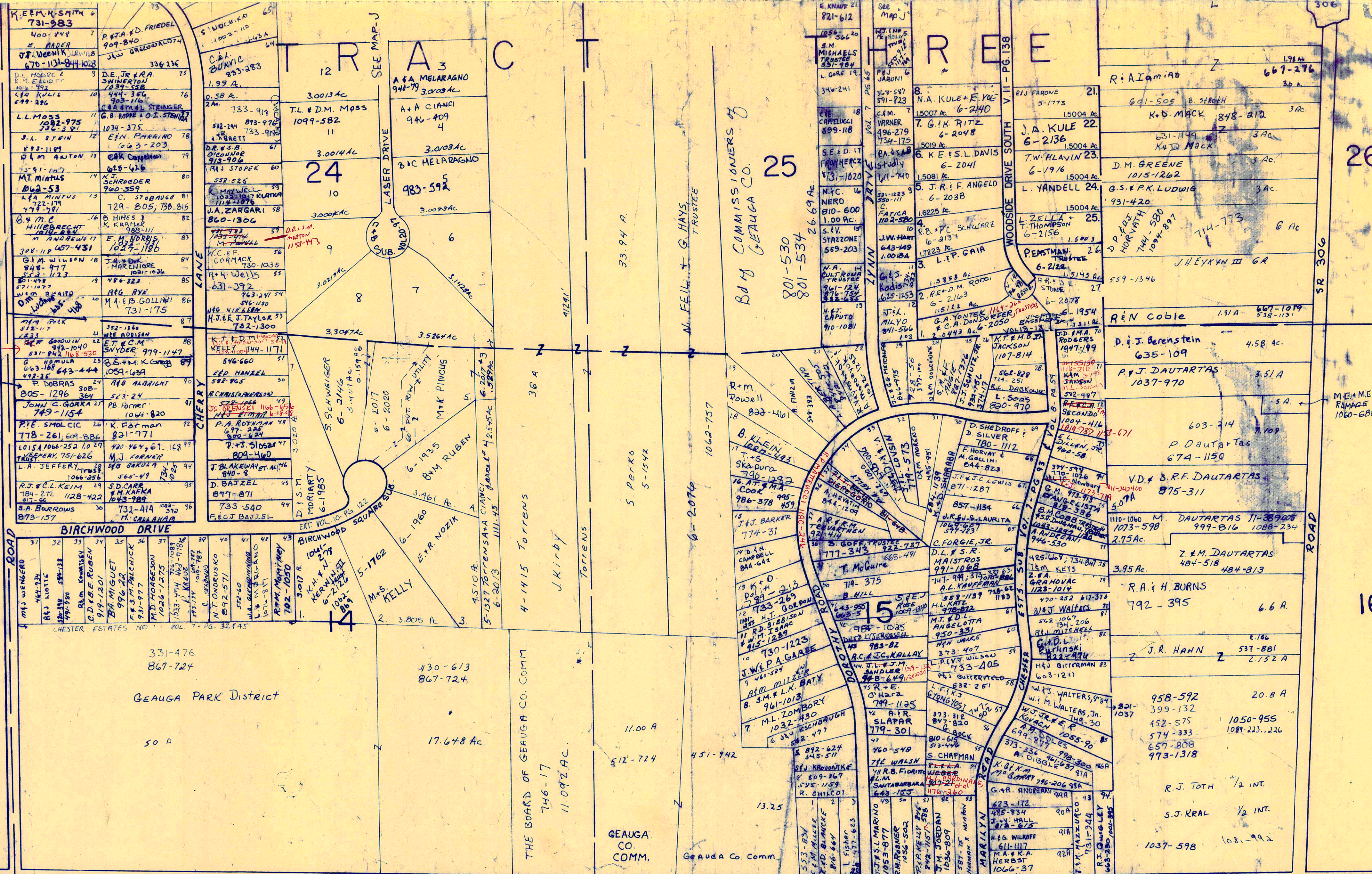
SCALE 1"=300'
JAN. 1, 1998

* inadequate description
✓ indicates survey on file with tax map dept.

RELATIVE REPRESENTATION

A	B	C	D
E	F	G	H
I	J	K	L
M	N	O	P

CHESTER M



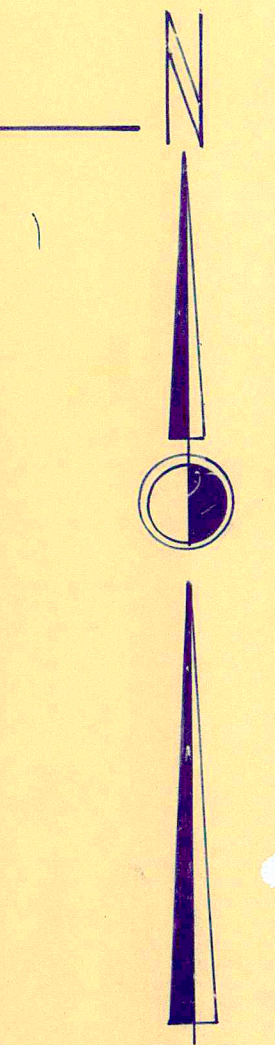
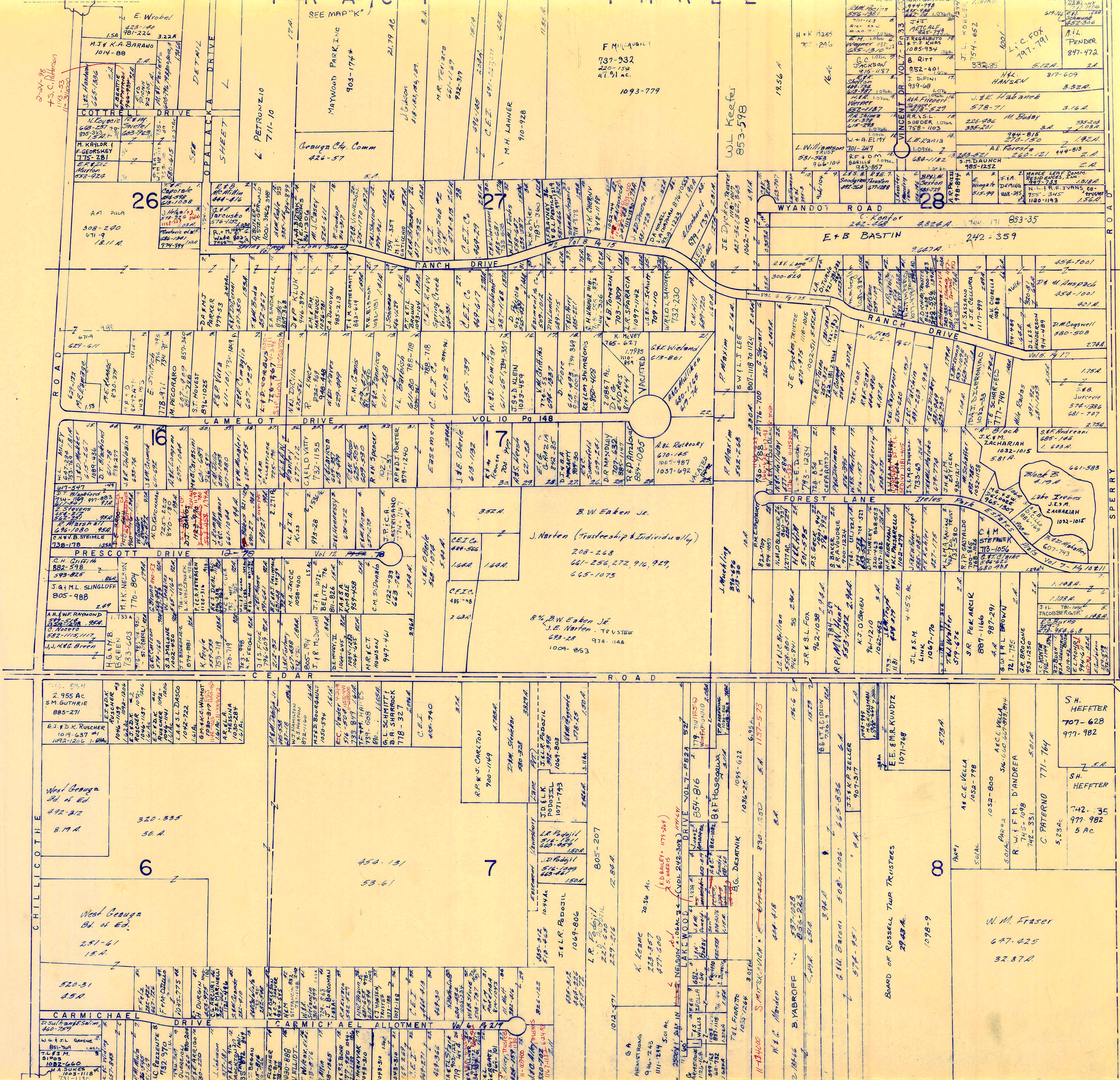
SCALE 1"=300'

✓ indicates survey on file with tax map dept
 JANUARY, 1998
 RELATIVE REPRESENTATION

* Inadequate description

A	B	C	D
E	F	G	H
I	J	K	L
M	O	P	

CHESTER N



SCALE 1" = 300'

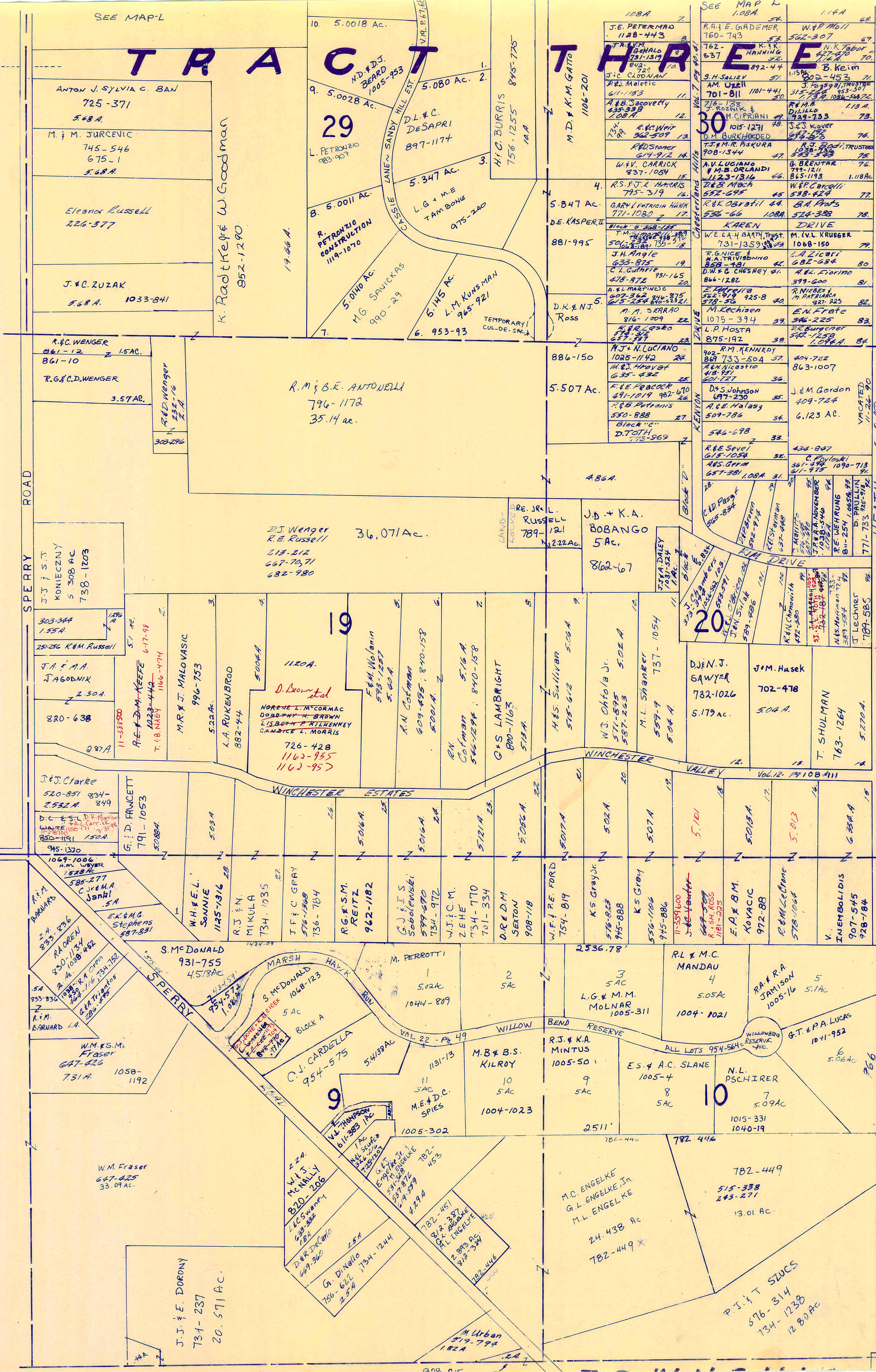
- SINDGER SURVEY Vol. 6 Pg. 49 Mats
1. E.L. Mohr
 2. E.L. Mohr
 3. E. Gustafson 257-599; 672-112
 4. R.C. Burns 257-757; 576-954, 6
 5. J.L. Jacobberger 781-1654
 6. " " "
 7. " " "

* indicates
 ✓ indicates survey
 on file with tax map
 dept.
 JANUARY, 1998
 RELATIVE REPRESENTATION

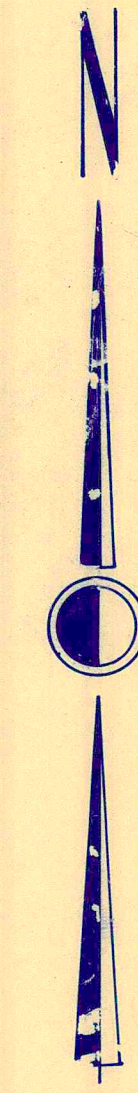
A	B	C	D
E	F	G	H
I	J	K	L
M	N	O	P

CHESTER O

CHESTER 1888



MUNSON TOWNSHIP
HEATH ROAD
MATCH LINE
751-721



SCALE 1" = 300'
JANUARY 1, 1948

* Inadequate description
✓ indicates survey on file with Tax Map Dept.

A	B	C	D
E	F	G	H
I	J	K	L
M	N	O	

CHESTER P